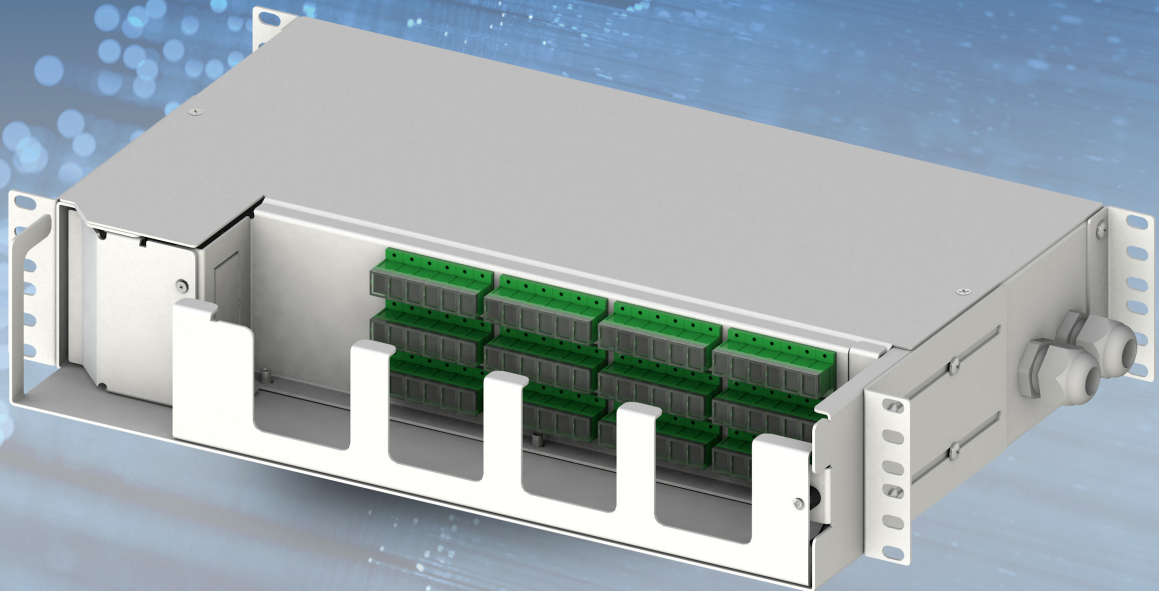


alfafonet[®]
Complete Connectivity Solutions




**Pivotsystem 2RU
FIBER OPTIC
PATCH / SPLICE PANELS**

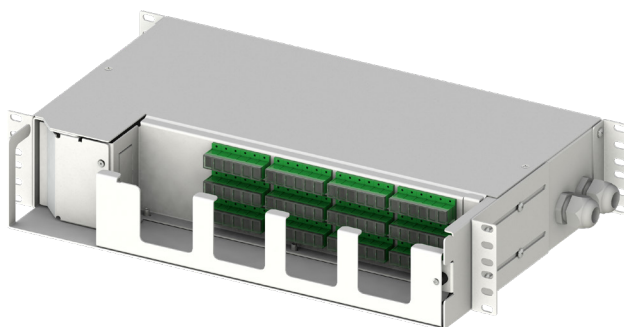
FIBER OPTIC PATCH PANELS
Pivotsystem


PIVOTSYSTEM 2U FIBER OPTIC PATCH/SPLICE PANEL


	Product Family
	PivotSystem


<input type="checkbox"/>	Standarts
<input type="checkbox"/>	19" RU
<input type="checkbox"/>	2 Rack Unit

Protection Rating	
	IP 10



	H	88	mm
	W	280	mm
	D	430	mm

	Available Colors:		
		Light Grey	(RAL7035)
		Blue	(RAL5024)

	Weight		
	Net	~3.2	kg
	Gross	~3.5	kg

PRODUCT OVERVIEW

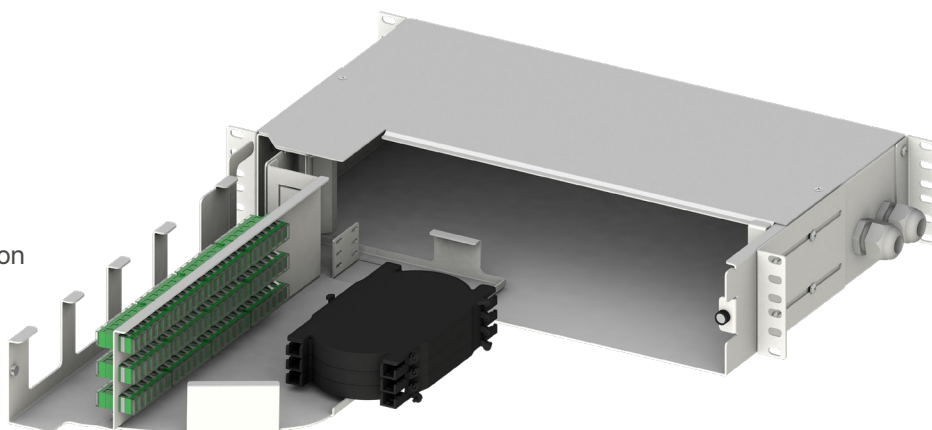
The PivotSystem 2RU Fiber Patch/Splice Panel is designed for use as a rack mount interconnect point where termination and connectivity of up to 144 fibers is desired. This solution allows for easy access to the front patch cords as well as the splice trays and pigtailed after being swung out. Standard panels are available empty for complete field configuration, half-loaded with adaptor plates for field termination and cable assembly installation, or stubbed with a factory-installed cable assembly of a user specified length.

Features

- Fits comfortably into new and existing interconnect, cross-connect, customer premise, and co-location environments
- Most common connector styles and types available
- Compatible with industry standard equipment frames
- Modular design
- Swing-open front swing-out tray
- Optional splice tray kit for on site conversion to patch and splice panel

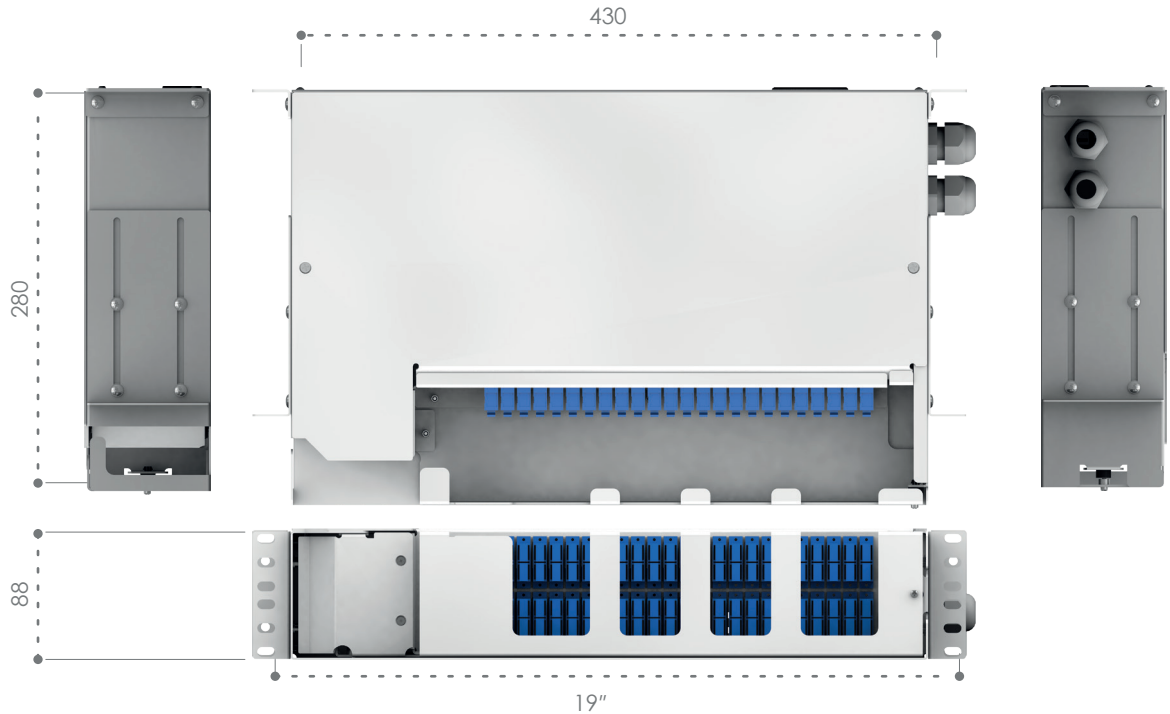
Specifications

- Aluminum Construction per ASTM B209
- Durable textured powder coat finish available in black or white
- Universal 19/21" EIA/TIA rack compatibility
- Standard density: up to 72 fiber, High density: up to 144 fiber
- Front and back side mounting options
- Standard cable stub location is rightside
- Optional cable stub location is rear



PIVOTSYSTEM 2U FIBER OPTIC PATCH/SPLICE PANEL

Dimensions



Exploded View

