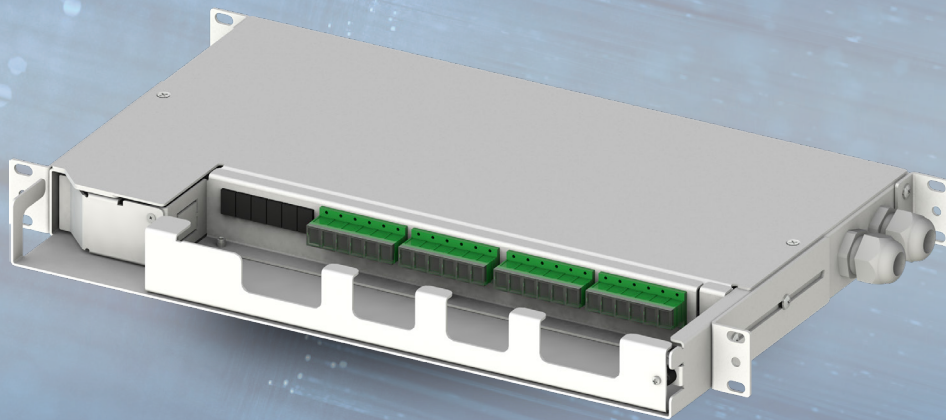


alfafonet[®]
Complete Connectivity Solutions




**PIVOTSYSTEM 1RU
FIBER OPTIC
PATCH / SPLICE PANEL**

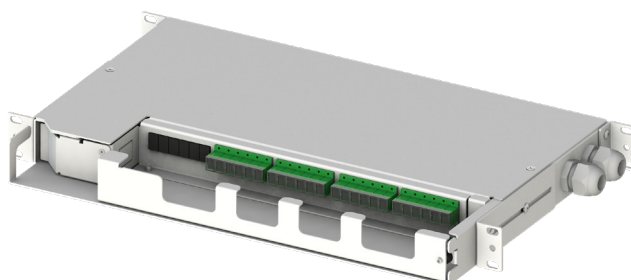
FIBER OPTIC PATCH PANELS
Pivotsystem


PIVOTSYSTEM FIBER OPTIC PATCH/SPLICE PANEL


	Product Family
	PivotSystem


<input type="checkbox"/>	Standarts
<input type="checkbox"/>	19" RU
<input type="checkbox"/>	1 Rack Unit

Protection Rating	
	IP 10



	H	44 mm
	W	430 mm
	D	280 mm

	Available Colors:	
	Light Grey (RAL7035) Black (RAL9005)	

	Weight	
	Net	~2.2 kg
	Gross	~2.7 kg

PRODUCT OVERVIEW

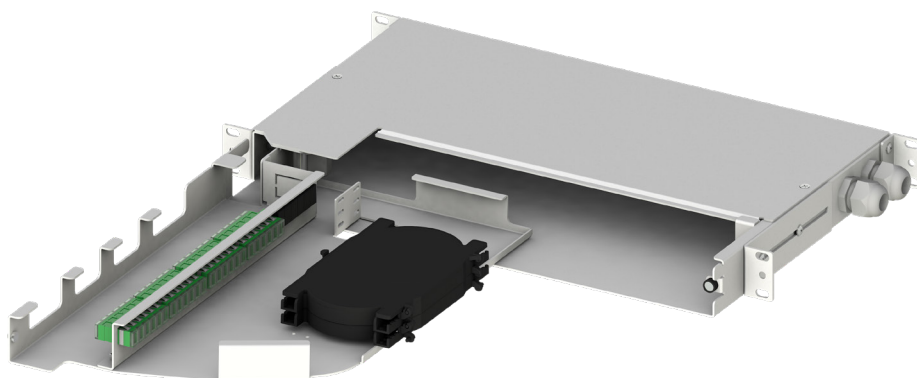
The PivotSystem 1RU Fiber Patch/Splice Panel is designed for use as a rack mount interconnect point where termination and connectivity of up to 48 fibers is desired. This solution allows for easy access to the front patch cords as well as the splice trays and pigtails after being swing out. Standard panels are available empty for complete field configuration, half-loaded with adaptor plates for field termination and cable assembly installation, or stubbed with a factory-installed cable assembly of a user specified length.

Features

- › Fits comfortably into new and existing interconnect, cross-connect, customer premise, and co-location environments
- › Most common connector styles and types available
- › Compatible with industry standard equipment frames
- › Modular design
- › Swing-open front swing-out tray
- › Optional splice tray kit for on site conversion to patch and splice panel

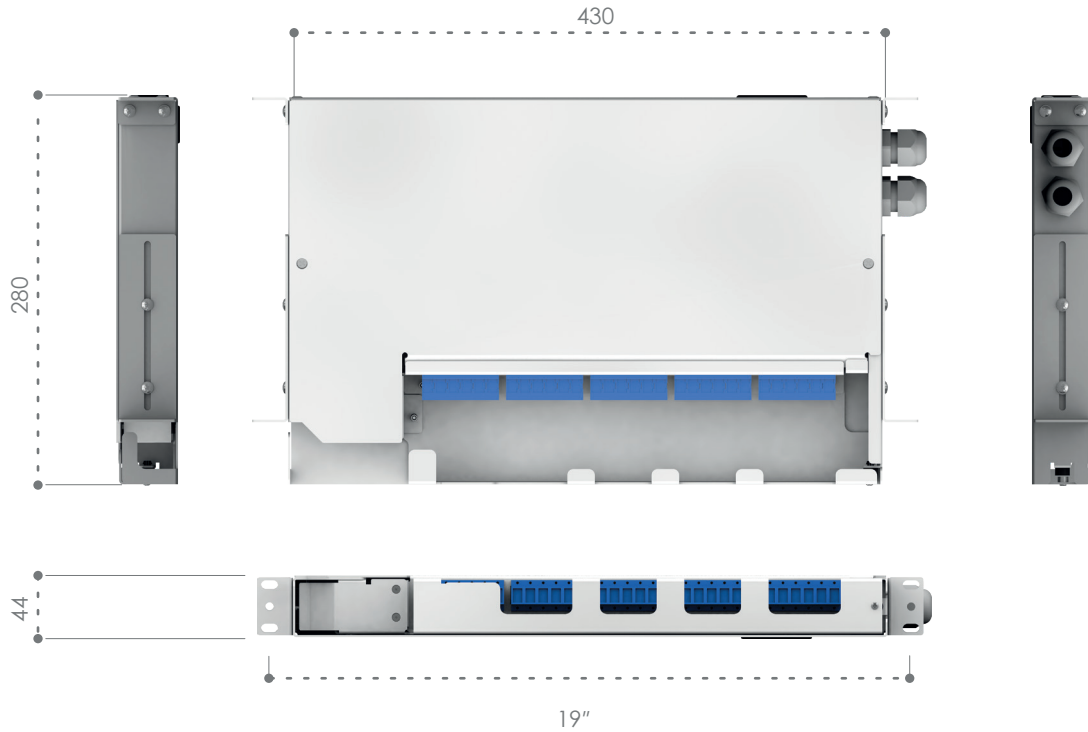
Specifications

- › Aluminum Construction per ASTM B209
- › Durable textured powder coat finish available in black or white
- › Universal 19/21" EIA/TIA rack compatibility
- › High density: up to 48 fiber,
- › Front and back side mounting options
- › Standard cable stub location is rightside
- › Optional cable stub location is rear



PIVOTSYSTEM FIBER OPTIC PATCH/SPLICE PANEL

Dimensions



Exploded View

